



Precision Work  
Professional Service  
Premiere Value

Precision Work • Professional Service • Premiere Value

**measure** DYNAMICS

Serving Clients **Nationwide**

Toll Free **877.548.9595**

Orlando **407.971.8688**

Tampa **727.548.9595**

[info@measureDYNAMICS.com](mailto:info@measureDYNAMICS.com)

“As a longtime commercial real estate specialist, I have had great success since discovering Measure Dynamics. The unbelievably cost effective product offers me the opportunity to furnish prospective Buyers or Tenants with detailed floor plans, a major selling tool for myself. Not only do I receive professional drawings, but a disc with the data that may be utilized by architects, engineers, etc.

Also, this product is excellent for verification of actual square footage. Recently Measure Dynamics did a building for a client and discovered that there were 400 more square feet than reflected in public records, which added considerably to the sales price of the property.

I highly recommend Measure Dynamics for a variety of uses, and intend on doing repeat business with them for a long time in the future.”

Patrick Calhoun  
C-21 Real Estate Champions

“Measure Dynamics takes the pressure off us, by getting out to our client quickly and by delivering the as-built plans before we know it!”

Frank Frazee, A.I.A., NCARB  
President, FRAZE DESIGN, INC.



**measure** DYNAMICS™



PRECISE LASER MEASURING  
and computer drafting

## Who We Are

Measure Dynamics is the premiere company providing precise laser measurement of existing building structures. We provide a finished drawing of "as-built" floorplans for all types of industry needs.

Measure Dynamics provides a valuable and versatile end product that is utilized by Architects, Interior Designers, Facilities Managers, Real Estate Brokers, General Contractors, Engineers and more!

Measure Dynamics is a company whose values, integrity and attention to detail make it the preferred provider of this service nationwide. Our performance is insured by our one-million dollar Errors and Omissions Performance Bond.

## What We Do

Our team of highly skilled professionals will measure all accessible areas of your existing building structure, using state-of-the-art laser measuring equipment. We use this data to reproduce a set of exact, to-scale floorplans reflecting the current condition of the structure, as it exists at the time of measurement. Specific attention is paid to the placement of doors, windows, openings and plumbing fixtures, as well as identification of wall thicknesses.

We provide the finished product, compiled in AutoCad format, in digital or printed medium. We also offer specialized formats reflecting precision color mapping of electrical systems, HVAC, voice data, as well as exterior elevations, presented to suit your specific needs. 24"x36" architectural-sized blueprints and exterior photographs are available upon request.

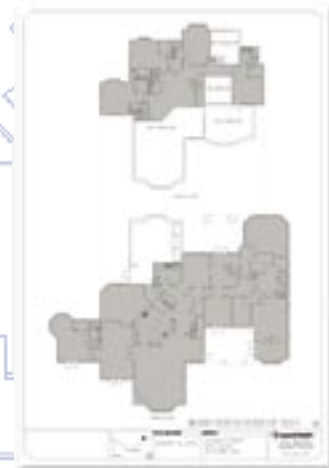
## Benefits to You

- **Protect Yourself**  
As an agent representing the condition and square footage of property to others, having a documented set of plans, and exact measurements protects you from liabilities resulting from disputes concerning building layout, measurements and features.
- **Maximize Rental Income**  
Documentation of your precise rentable area, and available BOMA analysis, allows you to maximize the rentable space and income potential of your commercial property.
- **Comply with Fire Protection Regulations**  
Use the Measure Dynamics generated floorplan to comply with all local fire department regulations. Many jurisdictions require filing of commercial building floorplans with the local fire department before a disaster strikes.
- **Help Your Architect to Help You**  
Having an accurate set of floorplans gives your architect or interior designer a point of reference for renovations and build-outs, saving time and money.
- **Update Your Plans**  
In addition to the initial measuring and drafting of floorplans, we can quickly and easily update the existing floorplans after any modifications to the structure.
- **Save Money**  
Our affordable rates allow you to maximize the value and presentation of your property; or reduce your overhead by out-sourcing building measuring and drafting work.

## Sample Floorplans



**Commercial Office Space**  
Measured to BOMA standards.  
Color mapping is used to group specific areas.



**Residential Property**  
Measured to A.N.S.I. standards to calculate the heated square footage.